

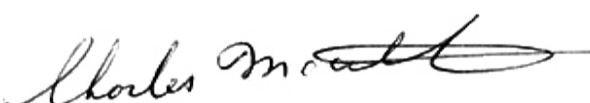
YUULU?IL?ATH GOVERNMENT

**ZONING AND STRUCTURES ACT
AMENDMENT ACT NO. 3**

YFNS 76/2022



This law enacted on June 13, 2022

Signed 
Charles McCarthy, President of the
Yuulu?il?ath First Nation

DEPOSITED IN THE
REGISTRY OF LAWS

ON 14/JUN/2022

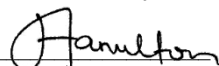

Signature of Law Clerk

TABLE OF CONTENTS

PART 1 - INTRODUCTORY PROVISIONS.....5
Short title5
Executive oversight5
Definitions5

PART 2 - ZSA AMENDMENTS7
Amendments to zoning district RL17
Amendment to zoning district IN27

PART 3 - OCP AMENDMENTS9
Amendments to Schedule 19
Land use maps9

PART 4 - GENERAL PROVISIONS10
Commencement.....10

SCHEDULE 111

PART 1 - INTRODUCTORY PROVISIONS

Short title

1.1 This Act may be cited as the Zoning and Structures Act Amendment Act No. 3.

Executive oversight

1.2 The member of the Executive holding the lands and resources portfolio is responsible for the executive oversight of this Act.

Definitions

1.3 In this Act,

“ZS Act” means the Zoning and Structures Act, and

“OCP Act” means the Official Community Plan Act.

PART 2 - ZSA AMENDMENTS

Amendments to zoning district RL1

- 2.1** (a) The numbering in section 22.1 of the ZS Act is corrected so that the three lettered subsections therein refer to sections 22.1(a), 22.1(b) and 22.1(c).
- (b) With reference to the numbering correction under subsection (a), section 22.1(b) is repealed and the following substituted:
- “The Legislature’s intent in establishing zoning district RL1 is to provide a zoning district for forest harvesting of timber resources, and gravel and mineral extraction that is performed in a sustainable manner while allowing for recreational activities and low density residential use.”.
- (c) Section 22.2(a) of the ZS Act is repealed and the following substituted:
- “22.2 (a) The primary use of a lot in zoning district RL1 may be
- (i) a residential use,
 - (ii) sustainable long term forest harvesting and salvage operations, excluding processing of timber, in accordance with applicable law,
 - (iii) ground excavation or extraction activities with respect to stone, rock, construction aggregate, riprap, sand, gravel, slate or other similar formation or mineral, or
 - (iv) parkland, trails or open space for outdoor recreational uses.”.
- (d) Section 22.3(a) of the ZS Act is amended by replacing the “;” at the end of section 22.3(a) with a “.”.
- (e) Sections 22.3(b) to (e) of the ZS Act are repealed.

Amendment to zoning district IN2

- 2.2** Section 11.2(b)(vi) of the ZS Act is repealed and the following substituted:
- “processing of timber harvested on zoning district RL1 or any other lands; and”.

PART 3 - OCP AMENDMENTS

Amendments to Schedule 1

- 3.1** Part A, 4.5 of the official community plan attached as Schedule 1 to the OCP Act is amended as follows:
- (a) Under the heading of “Goals”,
 - (i) in paragraph 2, “and non-timber resources are” is added immediately after the word “forestry” and the word “is” is deleted,
 - (ii) paragraph 3 is deleted, and
 - (iii) in paragraph 6, “Sustainable resource” replaces the word “Gravel”.
 - (b) Under the heading of “Objectives”,
 - (i) in paragraph 7, the sentence “Large scale dams and major hydro generation projects are the kind of projects that were created in the past: in” is deleted and replaced by the word “In”,
 - (ii) in paragraph 9, the words “and other commercial uses” are inserted immediately after “homes”,
 - (iii) in paragraph 10, the words “our own Citizens” are deleted and replaced with the word “Yuulu?il?ath”,
 - (iv) paragraph 12 is deleted, and
 - (v) paragraph 14 is deleted.

Land use maps

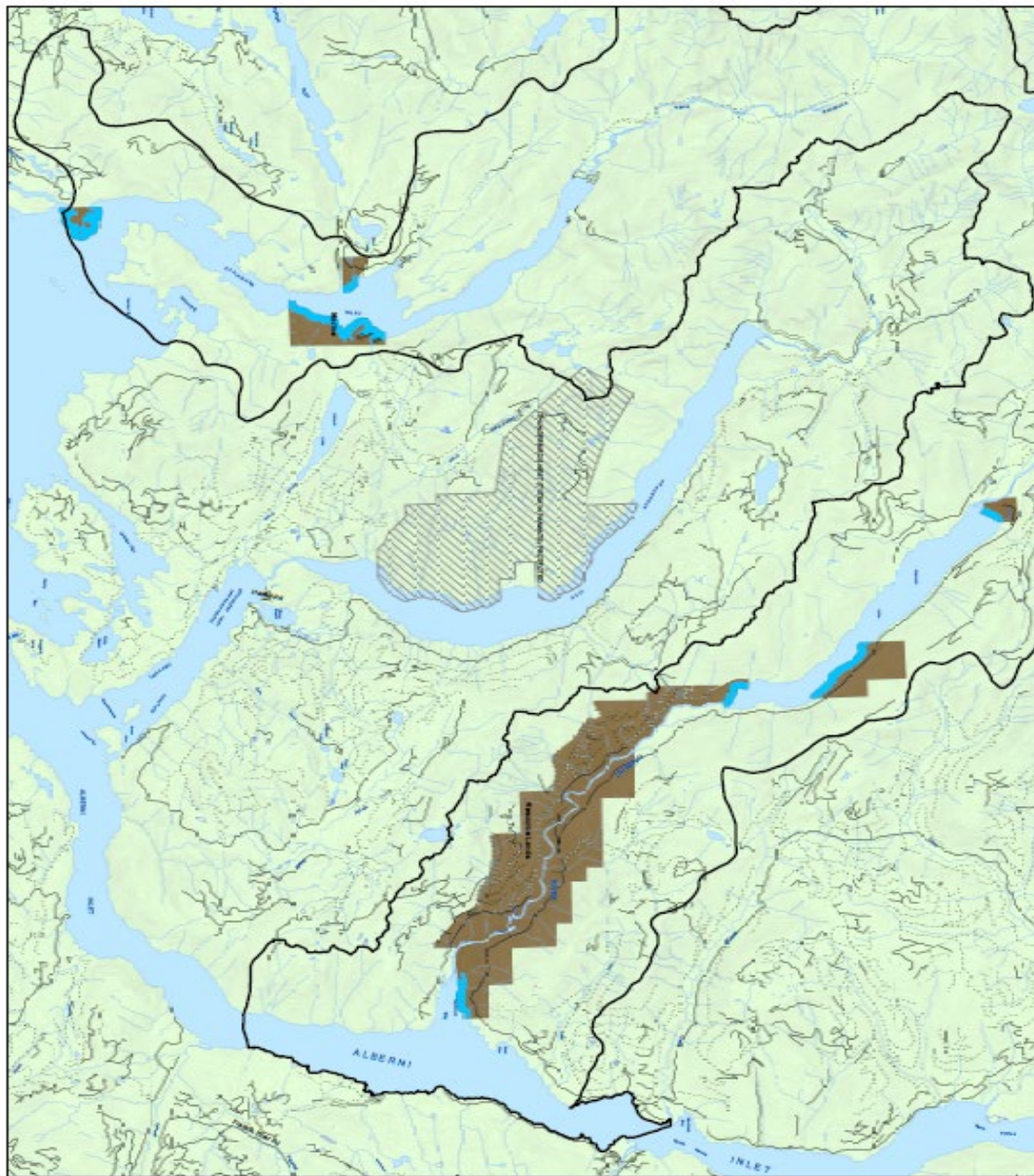
- 3.2**
- (a) The maps included in Appendix 1 of the official community plan attached as Schedule 1 to the OCP Act labelled “Land Use” or “Land Use Designations” are deleted and the pages attached as Schedule 1 are substituted.
 - (b) For certainty, Schedule 1 includes three maps that will replace two maps in the Appendix 1 referred to in subsection (a).


PART 4 - GENERAL PROVISIONS

Commencement

4.1 This Act comes into force on the date it is enacted.

SCHEDULE 1







Yuułu?il?ath
Treaty Land
Yuułu?il?ath Haisnuł

**Official Community Plan
 Land Use Designations**
 April 23, 2021

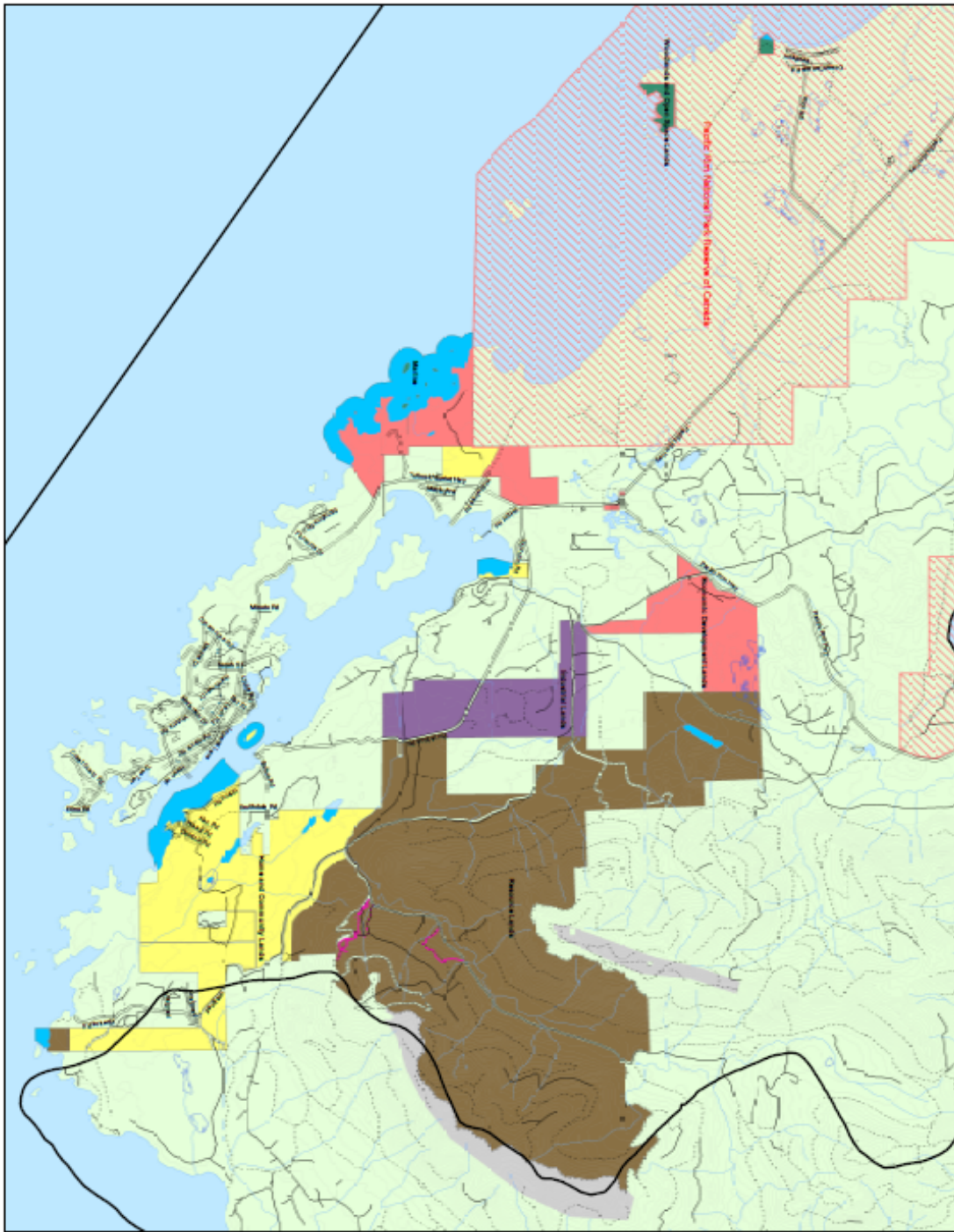
1:100,000

Legend

	Treaty Settlement Land
	Open Land Use Designation
	Home and Community Land
	Economic Development Land
	Industrial Land
	Resource Land
	Woodlands and Open Space Land
	Wetland
	Traditional Territory
	Natural Open Space
	Provincial Park
	Provincial Park
	Provincial Park
	BC Road Allowance
	Provincial Park
	Provincial Park
	Provincial Park
	Provincial Park
	Provincial Park
	Provincial Park
	Provincial Park
	Provincial Park
	Provincial Park
	Provincial Park
	Provincial Park
	Provincial Park
	Provincial Park
	Provincial Park
	Provincial Park
	Provincial Park


Map from: Treaty Settlement Land Use Designation, November 2019
 Original Map: Community Plan 2015
 Copyright: 1989 (Revised April 23, 2021)



Legend

Treaty Settlement Land


- OCP Land Use Designation
- Home and Community Lands
- Economic Development Lands
- Industrial Lands
- Recreational Lands
- Woodlands and Open Spaces Lands
- Wetlands
- Traditional Territory
- National Parks
- Tourism
- BC Rural Area
- Local Road
- Local Road
- Highway
- Subdivision
- Trail
- Wetlands
- Stream
- Water
- Shrub
- URBAN BROWN TOWN
- Existing Trail
- Proposed Trail



Yuutu?il?ath
 Treaty Land
 Yuu?il?ath Haanuu!

Official Community Plan
Land Use Designations
 April 23, 2021

1:50,000



0 200 1000 2000
 METERS

Data source: Treaty Settlement Land Use Designation Amendment, LUP
 Official Community Plan 2021
 City of Yuu?il?ath, November 16th 2021

